

Interactive Graphics Lecture 18

Non-Photorealistic Rendering

Graphics Lecture 18: Slide 1

Why Photorealistic?

Much graphics research is aimed at producing photorealism. Techniques that we have discussed include:

- textures
- bump mapping
- environment mapping
- ray tracing
- radiosity

Modern research continues this quest.

Graphics Lecture 18: Slide 2



Photorealistic Rendering
Cornell University
circa 1990

Graphics Lecture 18: Slide 3



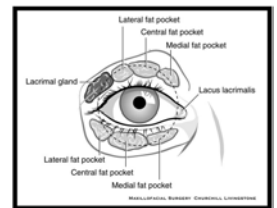
Non-photorealistic Rendering
Johannes Vermeer
circa 1660

Why Non-Photorealistic?

Schematic diagrams can show things that photos can't

An artist is often able to (expected to) convey "expressiveness".

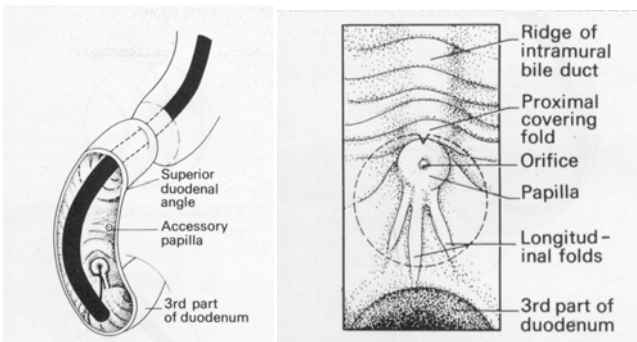
This has given rise to the field of non-photorealistic rendering



Medical illustration
From IBLS at University of Glasgow

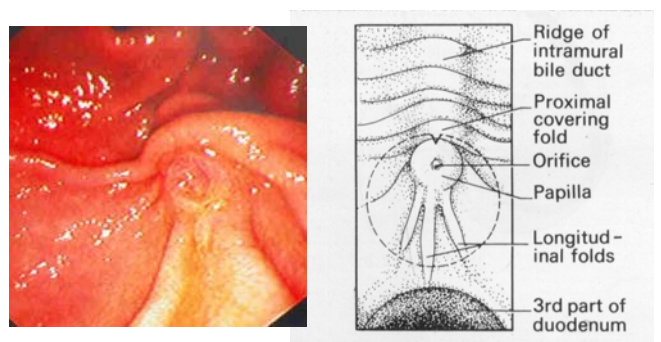
Graphics Lecture 18: Slide 4

Non-Photorealistic medical illustrations



Graphics Lecture 18: Slide 5

Non-Photorealistic medical illustrations



Graphics Lecture 18: Slide 6

Styles and Effects for media and games

An important commercial application for NPR is creating special “looks” for games or cartoon films. This can be done by:

Special rendering effects - either based on polygon rendering or on ray tracing

Post processing films or cartoons. This has proved hard to achieve as NPR often doesn't work well on a range of images. Hand processing of single frames is too time consuming.

Graphics Lecture 18: Slide 7

Cell-Shading – Rendering a 3D polygon scene as a cartoon. Used in video games (dreamcast)



Graphics Lecture 18: Slide 8

Cell Shading - uses polygon rendering

Create a Light map: this is a 1-Dimensional texture map that indicates the shade of an object. It is set up using a few discrete regions.



Find a reflectance with Lambert's cosine law, use its value to select from the light map

Add black lines at the visible polygon boundaries (or some of them, eg occluding boundaries)

Graphics Lecture 18: Slide 9

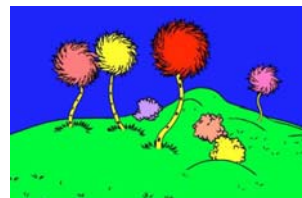
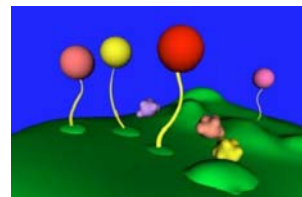
Creating other "animator" effects through rendering

Remove shading

Outline strong edges

Add Embellishments

Work by Kowalski et al



Graphics Lecture 18: Slide 10

Many NPR Systems Use Image filters

Start with a photograph

Blur - using the same techniques discussed for anti-aliasing

Quantise - Change colour or spatial resolution

Texture - combine texture and image by blending

Composite Filtering in different resolutions (more interesting)

Graphics Lecture 18: Slide 11

Blurring is done using the anti-aliasing filter

Replace each pixel by a weighted average of its neighbourhood:

$\frac{1}{36}$	$\frac{1}{9}$	$\frac{1}{36}$
$\frac{1}{9}$	$\frac{4}{9}$	$\frac{1}{9}$
$\frac{1}{36}$	$\frac{1}{9}$	$\frac{1}{36}$

Use several applications for more blurring, or use a larger filter kernel

Graphics Lecture 18: Slide 12

Blurring

Blurring images is fast and simple, but it doesn't really produce very interesting results.

It is important in combination with other filters

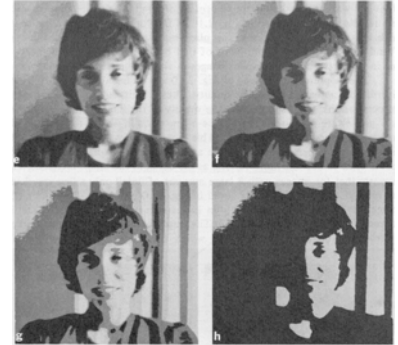


Graphics Lecture 18: Slide 13

Quantising Colour Depth

Change the number of colours or grey levels used to represent a picture.

Can produce interesting effects



Graphics Lecture 18: Slide 14

Quantising resolution and colour depth



Graphics Lecture 18: Slide 15

Edge Enhancement

Like blurring but with a different filter

Vertical Edge

-1	0	1
-2	0	2
-1	0	1

Horizontal Edge

1	2	1
0	0	0
-1	-2	-1

Find the magnitude of the two components

Change image depending on edge strength

Graphics Lecture 18: Slide 16

Creating pen images

Edges are found and reinforced

Shading is replaced with textures

Pictures from Intel 3D Software Technologies pages



Graphics Lecture 18: Slide 17

Composite filtering

Filtering in more complex manners can produce oil paint effects (Hertzmann and Perlin see <http://www.mrl.nyu.edu/projects/npr/painterly/>)



Graphics Lecture 18: Slide 18

Outline Algorithm

Initialise the output image to blank

For a given brush size (eg 32,16, 8 or 4 pixels)

Blur the source image using a filter size comparable to the brush size.

Find a difference image between the blurred source image and the current output image.

Threshold the difference image, so only large changes are retained.

Find local maxima on a coarse grid

Place a brush stroke on the output image at the local maximum using the corresponding image colour

Graphics Lecture 18: Slide 19

First stages of the technique using circular brush strokes



Source Image



1. Circular brush strokes, radius 16



2. Circular brush strokes, radius 8

Images Angela Phuong IC 2006

Graphics Lecture 18: Slide 20

Refinement using small circular brush strokes



Source Image



3. Circular brush strokes, radius 4



4. Circular brush strokes, radius 2

Images Angela Phuong IC 2006

Graphics Lecture 18: Slide 21

Hertzmann's original using elongated strokes



Graphics Lecture 18: Slide 22

A lakeside scene using circular brush strokes



Images by Angela Phuong, (IC-DOC project 2006)

Graphics Lecture 18: Slide 23

Creating effects by analogy

Work done by Hertzman Jacobs Oliver Curless and Salesin, University of Toronto (SIGGRAPH 2001)

The idea is to use effects created for one image on another image. Done using multi-resolution representation with local searches to find the best match.

The following examples are from:
<http://www.mrl.nyu.edu/publications/image-analogies/>

Graphics Lecture 18: Slide 24

Creating an analogy image

Given:

- A: The original source image.
- A': The original filtered image.
- B: A new image to be filtered.

For each pixel of the target image:

Search for the best matching corresponding pair in A, A'

A naive search does not work well. We need to have matching metrics that take into account the coherence of the evolving image.

Graphics Lecture 18: Slide 25

Creating Image Analogies

The algorithm uses a multiscale approach, working from coarse to fine representations.

At each stage the search for the best match takes into account the local areas and the pixels in the previous level of the pyramid.

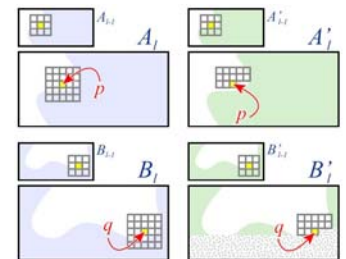


Image from Hertzmann et al.



Original Image



Image with a special effect



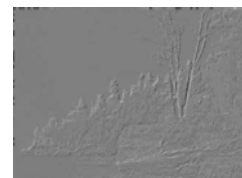
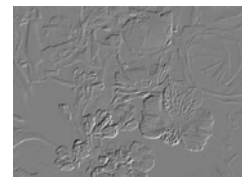
Take another image



Create an analogous effect

Graphics Lecture 18: Slide 27

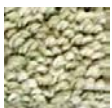
Analogies of basic filters -eg embossing



Graphics Lecture 18: Slide 28

Textures - mapped by analogy

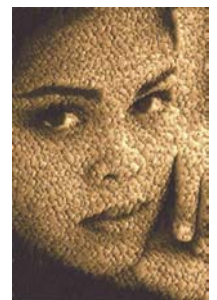
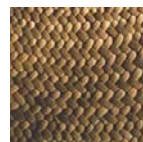
Blending textures into images can create interesting results - The texture is used for A and A'



Graphics Lecture 18: Slide 29

Textures

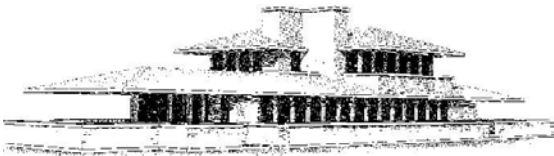
Different textures create different effects



Graphics Lecture 18: Slide 30

Rendering Methods

Non photorealistic rendering can be applied directly to polygon maps



Graphics Lecture 18: Slide 31

Creating pencil drawing effects

Pencil drawings are made up from “strokes” of the pencil which have:

variation in width from pressure and direction

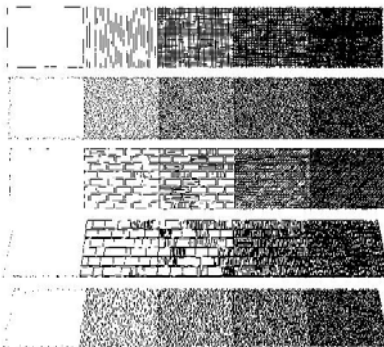
Tones (gradations of shade) and textures are created by

Combining strokes in different patterns

Graphics Lecture 18: Slide 32

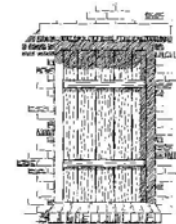
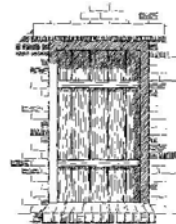
Different textures and tones

Textures and tones can be pre-computed then used for rendering.



Graphics Lecture 18: Slide 33

Effects of different strokes, tones and textures



Polygon rendering with stroke textures

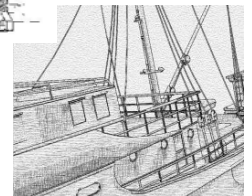


Image filtering with stroke textures

Graphics Lecture 18: Slide 34

Stroke Textures

Collection of strokes to give texture and tone
Prioritised so that different tones can be achieved
first only highest priority drawn
to increase tone, lower priorities drawn

For example:

highest priority to outline
next could be horizontal lines
then vertical, and so on

Graphics Lecture 18: Slide 35

Indication

Texturing uniform areas uniformly does not produce good results.

Indication is the process of adding guidelines for texturing

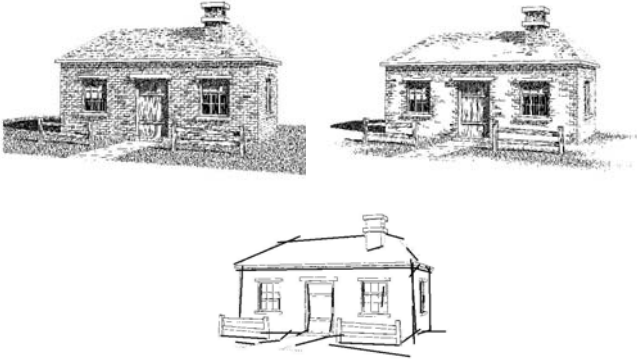
The distance of a pixel from the guide line indicates the amount of texture used

(Could be defined in the graphics scene)



Graphics Lecture 18: Slide 36

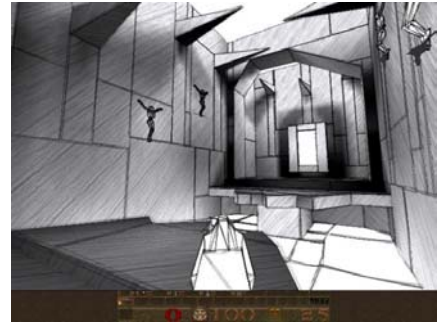
Using Indication



Graphics Lecture 18: Slide 37

Pencil Sketch - Quake

Main polygons shown - simple line shading - polygon edges rendered with stroke textures



Graphics Lecture 18: Slide 38